



NORTH SMITHFIELD HERITAGE ASSOCIATION

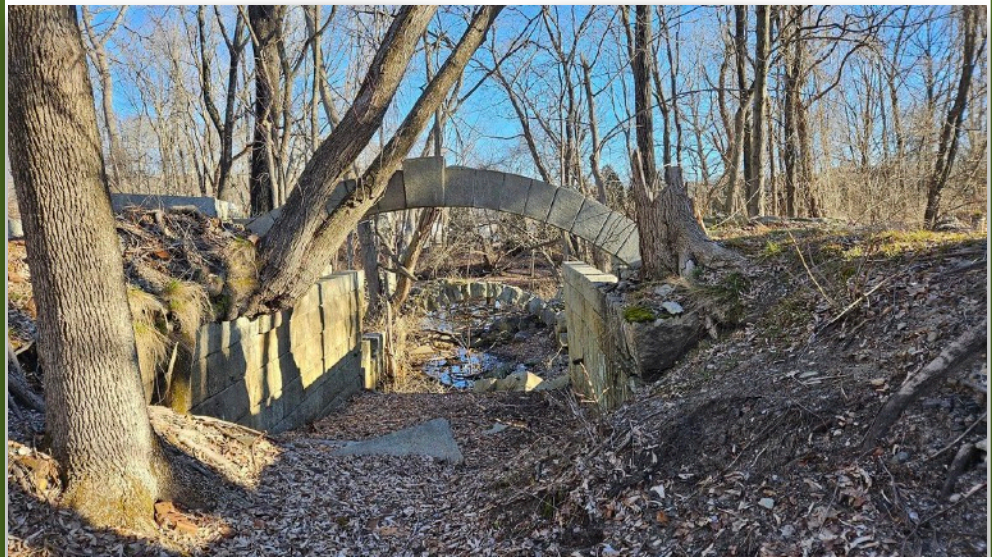
MONTHLY NEWSLETTER

Volume V Issue I~ January 2024

IN THIS ISSUE:

- ~Thank you
- ~From the Archives
- ~Fifty Years Ago
- ~NS Historic Cemeteries
- ~Historic Cemetery
of the Month
- ~NS Musician Profile
- ~Preservation &
Restoration
- ~Maintenance
- ~Veterans Memorial
Program
- ~Research
- ~2024 Heritage Walks
Schedule
- ~Mystery Photo
- ~NSHA Merchandise
- ~Membership
- ~Outreach

Mammoth Mill Park clean-up



Eighteen volunteers braved the cold on Martin Luther King Jr. Day to pick up trash and clear trees and underbrush at the Mammoth Mill on Mill Street and along the Blackstone Canal on Canal Street. Some came from as far away as Providence! They made remarkable progress. We plan to resume the clean-up at 9:00 am on President's Day, Monday, February 19, 2024.

Volunteers are always welcome!

More photos on page 2.....





Some of the chilly but hard-working volunteers who helped to clean up at Mammoth Mill.



Calendar *for* Sale

North Smithfield Heritage Calendar
2024

\$10



2024 North Smithfield Calendars are available for \$10 at the following locations:

- Wright's Dairy Farm
- Leeway Ace Hardware
- Village Paint and Decorating,
- Memorial Town Building
- NS Heritage Assn Online Store

Sales promote local historic preservation efforts.



The new 2024 NSHA calendars are still available!!

These high-quality calendars feature beautiful images of local historic buildings and landmarks.

Support our preservation activities and learn about our town's heritage!

We will mail them for an additional \$5 shipping fee or deliver them locally for free.



Annual Appeal 2024



COMMUNITY ANNUAL APPEAL

We rely on you to help preserve North Smithfield's amazing heritage!

2023 INITIATIVES

- ✓ Complete restoration of Forestdale School interior
- ✓ Cemetery restoration
- ✓ Historical artifact acquisition & preservation

WAYS TO DONATE

- Scan QR codes for PayPal or Venmo
- Mail check payable to NSHA to P.O. Box 413, Slatersville, RI, 02876
- Drop off at the Memorial Town Building
- Call 401-447-6394 to arrange doorstep pickup



For any questions or inquiries please email:
nsha@nsheritageassn.com
 or visit:
<https://www.nsheritageassn.org/>



Board Giving: Each year, the NSHA Board of Directors sets an example for the community by making meaningful donations in January to the NSHA. Last year, their donations covered 15% of the organization's operating expenses.

Make a 2024 donation! We appeal to the community to help fund our preservation efforts with a tax-deductible donation. Renovation of the historic Forestdale School is almost complete and we now plan to renovate the main hall at the Memorial Town Building. Please help us to complete these projects at two iconic historic buildings.

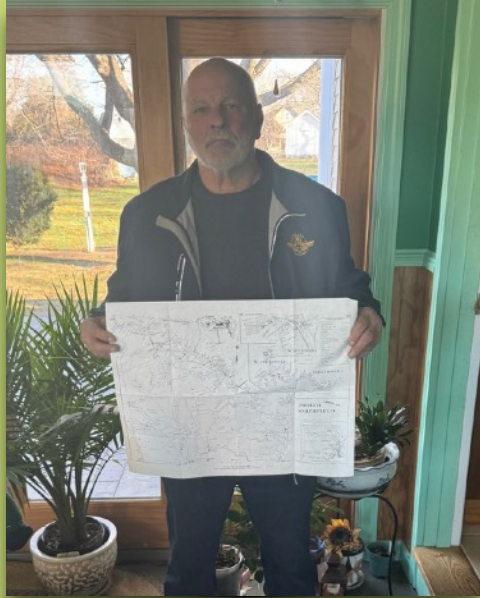
You may make a tax-deductible donation via mail, PayPal Giving Fund, or Venmo. Or you can simply drop off your donation or pay with a credit card at our headquarters at the Memorial Town Building, 1 Main St. during our weekday morning business hours:

Tuesdays from 9:00 am- 12:00 pm or Mondays and Wednesdays from 10:00 am- 12:00 pm.

We will also pick up donations at your door! **Any amount helps enormously!**



Thank You



We thank Steve Biron for donating an 1895 map of North Smithfield. We think it came from Walter Nebiker's 1975 book, "*The History of North Smithfield.*"



Al Menard and Sam Turco continue to work tirelessly to manage our extensive archives. We welcome help from anyone with an interest!

We also thank Jill Boday for donating her mother's (Judy Langford) collection of North Smithfield High School yearbooks from 1969 to 1991. Yearbooks and class photos preserve more of the local school system history than any other source.

We appreciate the opportunity to scan any photos or yearbooks from our local schools. Please contact us if you have any you would like to share!

Your family photos and old letters contain our local heritage!

Please allow us to scan them to maintain a digital copy in our archives.

Important! Please write the names on the back of your photos of all the people photographed and the location if possible. Use a pencil as ink may damage the photos. Too many wonderful photos get thrown away because younger generations don't know who is in them. Images of ancestors are then lost forever.

Please contact us at nsha@nsheritageassn.com or call [401-376-2927](tel:401-376-2927)

The NSHA archives and the research center is open at the Memorial Town Building every Monday and Wednesday from 10:00 am until 12:00 pm or Tuesdays from 9:00 am until 12:00 pm. Stop by and visit or contact us to make an appointment to visit on another day.



Thank You



We thank Hercules Pizza for clearing the brush and scrub trees from the lot behind their building. It looks so much better now!



We also thank the NSDPW for the clean-up they have done at **Centennial Park** behind the NS Library. They have made remarkable progress and the park hasn't looked this good since it was created 50 years ago. We look forward to further improvements in this area!



Archives

Slatersville Dorr Rebellion Flag

Conservation work on the Slatersville Dorr Rebellion Flag is now complete! We thank Maria Vasquez of Royal Conservation and Exhibition for her masterful work and the June Rockwell Levy Foundation for funding this project.

Jon Peirce, a master furniture maker who owns the local Industrious Revolution, offered to donate a specially made mahogany display table for our priceless 1842 artifact. Work is underway and he expects to finish the table next month. When finished, this display will become the centerpiece of our future museum at the Memorial Town Building. Meanwhile, the Varnum Armory in East Greenwich will continue to store the flag in its climate controlled building.



Before and after photos of the flag.



Jon Peirce is building the legs to the mahogany display table in his shop.





Archives



This dress was accidentally mounted backwards on the mannequin which is placing unnecessary strain on the seams. It will cost approximately \$700 to repair and remount on a proper mannequin.



Maria Vasquez of Royal Conservation and Exhibition recently stopped by to look over our collection of antique dresses and to give us estimates to create new properly fitting mannequins as well as conserve as needed.



The fabric on this wedding dress is torn in many places and will require extensive work to conserve. The estimated cost is about \$2000 and it would be a long-term project that we will only undertake if we get grant funding.



This child's gown with hand stitching is in better shape. It will cost about \$700 to mount.



From the Archives

Civilian Conservation Corps- Woonsocket/Primrose Camp by Al Menard

It was the Depression. More than twenty-five percent of the population was unemployed, hungry and without hope. Newly elected President Franklin D. Roosevelt called on Congress to authorize a program dear to his heart. The Emergency Conservation Work Act, better known as the Civilian Conservation Corps, was created on March 21, 1933.

While governor of New York, FDR had developed a relief program for the unemployed where they did conservation work on state parks and forests. The CCC would be similar.

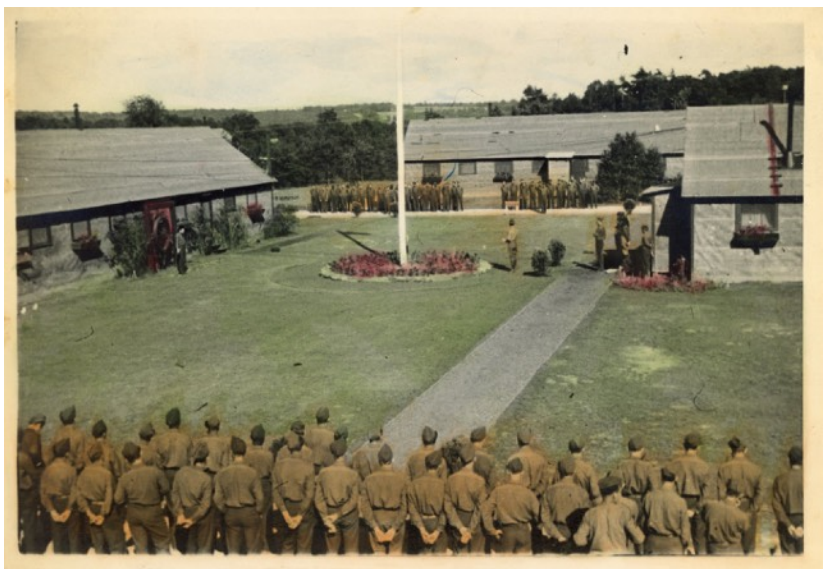
Working closely with state relief agencies, the Labor Department selected single men between the ages of 18 and 25, primarily from families on the relief rolls. The men would receive \$30 a month, but they had to promise to send \$25 a month back home to family dependents. The men committed to a six-month enrollment that could be extended for up to two years. CCC workers were housed and fed on-site at campsites. The Army ran the camps, but it was a civilian organization.



Capt. Webster L Simons, commander and founder of the Primrose Camp. He was the grandfather of Roger Haskell who generously donated this photo and other CCC Memorabilia to the NSHA.

On June 1, 1935, Capt. Webster L. Simons led a cadre of twenty-two men from the 130th Co. in Alfred, Maine to North Smithfield, RI. They pitched their tents on farmland the government leased from the Cesario family. It was near the Primrose train station on Black Plain Road.

Two months later one hundred sixty-five men from R.I. joined the camp. Soon there would be sixteen sturdy wooden buildings, including four barracks, living quarters for officers, a recreation hall, infirmary, mess hall, schoolhouse, and other buildings that became the Primrose CCC camp.



Enrollees wearing their uniforms and standing at ease at retreat and lowering of the flag in the camp courtyard.



From the Archives

Peter F. McManus was assigned as camp superintendent with a staff of eight foresters. The young men built roads, planted trees, fought forest fires, strung telephone lines, and improved state and national parks. At the Primrose CCC camp the work included a stream correction project on Mowry Brook, controlling gypsy moths in the Lincoln Woods Reservation, completing the road project on Whortleberry Hill, construction of an access road to the fire tower on Woonsocket Hill, and constructing a two-mile road in the Spring Lake section of Burrillville. Probably the most enduring of their efforts was the building of the toboggan and skiing slides at the Diamond Hill Reservation.

The camp had an educational program that was rated the best in the New England area. One proof of this was Philip J. O'Donnell, a senior leader, at the camp. He entered an essay contest sponsored by the CCC official newspaper, "Happy Days", and competed against CCC youths from every other camp in the United States. His essay on "What the CCC Has Done for Me," was selected as the best in the country. As the winner, he received a cash prize of \$25 and a trip to New York City where, at 5 o'clock on the afternoon of April 4, 1937, O'Donnell read his essay on the radio program, "We the People." He was then flown to Washington D. C. for a reception and meeting with President Roosevelt.

Though the Primrose CCC existed for just over two years, it was praised as an exemplary camp. It had an orchestra, an excellent education program, two baseball teams, a volleyball team, and a boxing squad. It was also noted for having some of the most beautiful landscaping of any CCC camp.



Senior leader Philip O'Donnell meets with President Franklin D. Roosevelt at the White House, April 1937.



The entrance to the camp off Black Plain Road. Only the officers were allowed vehicles. The enrollees were not allowed to bring vehicles on the premises.

Although the Primrose CCC Camp had a brief existence, its legacy extends far and wide. We honor and value the camp's contributions, from guiding numerous boys into adulthood to their conservation efforts that continue to impact the land today.



Monthly Board Meeting



The Board of Directors will meet at 6:30 pm on Tuesday, February 13, 2024 at Heritage Hall, 101 Green Street. Members are welcome to attend in person or via Zoom. Zoom information is included in the email notification.

Genealogy

Would you like help to conduct research on your family tree? Lynne Pelletier has extensive experience and access to several databases. Please contact nsha@nsheritageassn.com to coordinate an appointment.



Ghosts and Paranormal Activity



Have you heard about or seen a ghost in North Smithfield? We would like to document it! Anyone interested in joining the Paranormal Research Team please contact us at nsha@nsheritageassn.com.



Education

Two NS High School Seniors continue their work with NSHA mentors to complete their senior projects.

Ava has conducted several oral interviews with residents. Please contact us if you'd like to share your experiences and memories of living in town.

Nick continues to work on photo surveys of local rivers and major waterways.

Finance



THE CHAMPLIN FOUNDATION

Beth Faricy and her team applied to The Champlin Foundation for a grant to replace the windows at the Memorial Town Building. The team will soon apply to the 1772 Foundation for additional funds as well as a capital request to the town to begin renovations on the second-floor hall. If the stars align, we plan to open a museum next year in the renovated spaces!



THE 1772 FOUNDATION



Fifty Years Ago

Here's the next section in our continuing article "A Road By Any Other Name" by George A. Harvey. It comes from the February 1974 Heritage Association newsletter. We began publishing segments of this article back in May and if you missed any parts you may catch up by visiting the newsletter section of our website.

South Main Street at Union Village to Green Street at the Brick Tavern

Our work is simpler now. This segment of the old lower Mendon Road has never had anything but the most general kind of designations until after the 1900. Deeds and old records simply call it the Providence-Worcester Road, the road at Union Village, the road to Slatersville and the like. We cannot determine when local residents began to use the name Great Road as a proper designation. Town records don't make much note before 1900, and the Union Village was sufficient address for most people who lived there.

It would appear that Great Road as a proper name has been given only to those sections in the old system that never had any other designation. One might judge that Great Road simply was not considered an acceptable name or it would have been in common use long before the twentieth century.

The challenge to the integrity of Great Road no longer comes from the past but from the present: it is being swallowed up by Victory Highway which somehow slipped through the stop light at Carpenter's Corner, its assigned endpoint, and has driven past the end of Green Street nearly all the way to the Branch River.

Here's what has happened. During the road building boom of the 1920's, the construction of Louisquisset Pike was joined by the creation of a brand new set of roads, part of which is named Victory Highway. This is a state designation for a certain route that connects Carpenter's Corner to Wickford. It was apparently designed to encourage travelers from Massachusetts to discover the scenic shores of Narragansett Bay and give them access to the toll-supported Jamestown Bridge. While this road was in the sections of Great Road from Park Square to Forestdale were rebuilt: and just west of the Branch River by the Shell gas station, a piece of road was relocated to avoid a steep hill. Now if Great Road already goes over the hill, what do you call the relocation? It seems obvious that it is all Great Road including the relocation. (Pound Hill Road contains a fine illustration of just such an instance near the expressway.) Some say the section on the hill should be renamed Old Great Road, but we already have one of those, so let's not create more confusion.

But confusion we do have, for the town highway department and the telephone company decided to call the relocation and everything west of it Victory Highway all the way to Carpenter's Corner. Preposterous! But there it stands. Road signs at the end of Main Street, Forestdale, now proclaim that the driver is entering Victory Highway, Great Road beginning a couple of telephone poles to the east. We opt for the name Great Road and claim that both history and popular usage are in our favor. Great Road should extend all the way to Green Street- and end!

What about the section of highway between Green Street and Carpenter's Corner which was also constructed in the 1920's? Is this not just an extension of Great Road- thereby entitling it to share this name? Hopefully not. The great road system is unlike any other highway around and deserves to have its integrity protected. Well then, this road also appears to be an extension of Victory Highway. Can it share that name? Possibly, but the state said that Victory Highway has its northern terminus at North Main Street. Furthermore, a study of old maps shows that the new section actually curves north just before it enters Carpenter's Corner and reaches the state line via North Main and Ironstone Streets (Quaker Highway). This is the northernmost link in the Providence-Worcester highway so far as Rhode Island is concerned. Some years later the state named the whole of the old route 146 from Providence to the state line at Uxbridge to the Eddie Dowling Highway. It becomes quite clear then that the section of road between Carpenter's Corner and Green Street has no acceptable name in spite of occasional state engineers and others who have mistakenly declared from time to time that it was either Victory Highway or Great Road.

Next month: Green Street at the brick tavern to the Massachusetts line at Millville (originally Mendon)



NS Historic Cemeteries



A recent storm brought down this oak tree at Hotchkiss cemetery. Luckily, it managed to fall with out damaging any gravestones



We thank NS DPW for cutting up and disposing of the fallen oak tree.



We thank Bob Hanson for cleaning NS22, the Richard Mowry cemetery on Greenville Road. Many grave stones have fallen and Bob's clean-up of the brush and leaves will make repairs MUCH easier!



We also thank Paul Collimatti for also helping to cut up the big tree fall at Hotchkiss Cemetery.

Check out all of the cemetery restoration work on our NS Heritage Assn. Cemetery Group Facebook page.



NS Historic Cemeteries

During a recent winter storm, several large trees fell in the heavily overgrown NS10- Morrison, Streeter, Freeman Cemetery of Old Smithfield Road. The large treefall damaged several gravestones as well as a stone wall that forms part of the enclosure surrounding the small family cemetery. We thank Bill Frye and Joanne Pacheco along with NSHA volunteers for their hard work in removing the trees and undergrowth. We plan to resume clean-up soon and hope to start repairs in the spring. We welcome any help we can get!





Historic Cemetery of the Month

NS 15, The Joseph Inman Lot
by Lynne Pelletier



The Joseph Inman Lot is located on Douglas Pike (Route 7) at pole #138. The cemetery sits upon a stone wall and while there are no visible boundary markers surrounding the graves, the cemetery is said to measure 55'x15' according to lot measurements at town hall. There are 15 burials here, however there are only 4 graves with inscribed headstones. Unfortunately, many of the stones have fallen or been displaced by the trees growing close by.

The first grave belongs to Joseph Inman who was born in Gloucester, Rhode Island in 1764. His parents were Oziel Inman and Ruth Eddy. Joseph was married twice, first to Lillis Mathewson from whom he was divorced in 1802, and to Rosanna (maiden name unknown). *Ancestry* family trees indicate that Rosanna's maiden name may have also been Mathewson however I can find no records to verify that.

Joseph had three sons: Rebues, born in 1789, Valentine, born in 1791 and Harkness born in 1800. It is interesting to note however, that the mother of the children is always listed as Rosanna Mathewson and not Lillis Mathewson. If the divorce took place in 1802, then the children would most likely be the children of Lillis and not Rosanna since they were not yet married. Joseph died on October 31, 1846 at about age 82.



a chest of drawers built by Joseph Inman

One more interesting fact about Joseph: it appears he may have been a furniture maker. I found a photo of a chest of drawers that Joseph built that still exists in a private collection today. According to the *Rhode Island Furniture Archive*, this piece of furniture was originally owned by Lydia Mowry in 1794 and was passed down through generations of the Mowry family before ending up at Sotheby's auction house and eventually a private collection.



Joseph Inman's signature is written inside.



The next grave belongs to Rebues Inman who was born on August 19, 1789. Rebues also was married twice. His first marriage was to Polly (maiden name unknown) in about 1810, although I have not been able to find a record of it. Rebues and Polly had two children; a daughter named Cindarella, born in 1811 and a son named Jenks, born in 1817.

Rebues next married Louisa Wood on January 28, 1828 so I assumed that Polly must have passed away. However, when I searched for her death record I was surprised to see that Polly did not die until 1869, some 24 years after Rebues died on February 19, 1845. Maybe a divorce took place in this family also?

Rebues and Louisa had at least eight children together; three daughters and five sons that I could find. Two of those sons are also buried in this cemetery and tragically they are both children who died young. Welcome M. Inman was born on February 21, 1837 and died on July 21, 1844 at age 7. Samuel M. Inman was born in October 1838 and he died on August 3, 1844 not quite two weeks after Welcome died. Samuel was only 5 years old. One can only imagine that a childhood illness took the lives of both boys.

Rebues Inman



Welcome M. Inman



Samuel M. Inman



North Smithfield Musician Profile



North Smithfield Musician- Robert Rogler by Michael J. Boday

In the September 2021 issue of the North Smithfield Heritage Association newsletter, a profile of 1985 North Smithfield High School graduate, Robert Rogler was published. Mr. Boday, former North Smithfield Music Director, recently provided us with an update to that story:

In 1985, Robert made musical history in Rhode Island when one of his works for symphonic band was selected and performed by a Rhode Island All-State Band. He would go on to win the John Philip Sousa Band Award for this piece. He received his Bachelor of Music degree from Aberdeen University in Aberdeen, Scotland and has worked as a classical music composer ever since.



Robert Rogler

Robert has performed his chamber music on tours throughout Europe and North America and his orchestral works have been played from Hawaii to Estonia. Despite this, Robert Rogler's music has remained somewhat of a mystery to both the establishment and the public. Exquisite and pure, Robert's music is unencumbered by trends and schools of musical thought; it is free of agenda and politics. In the words of Estonian Classical Radio music critic Priit Kuusk, it is "simply beautiful music."

For those who do not wish to see simply beautiful music disappear from the earth, Robert has shared his work with the world through recordings, concerts, and on a website, where there are videos and excerpts of a wide variety of pieces to discover. We hope that you will take the time to explore and find the enjoyment in his music that I have found!

Visit The Robert Rogler Collection website at <https://roglercollection.com/robert-rogler-composer> to learn more.





HERITAGE HALL

*Perfect for
your small
Event*

101 GREEN ST
NORTH SMITHFIELD, RI
NSHA@NSHERITAGEASSN.COM

CHAIR LIFT ACCESSIBLE



Heritage Hall Rentals (101) Green Street

Rent the newly renovated upper and lower halls!

Visit the NSHA website for an application and rules: <https://www.nsheritageassn.org/general-3>

Call Jeanne at (401) 447-1801 to make a reservation or send an email to nsha@nsheritageassn.com



Preservation and Restoration



Memorial Town Building (1 Main Street)



The cover to the roof access opening at the Memorial Town Building blew off during a recent storm. Charlie was able to put it back into place and secure it before the rains returned.



The Memorial Town building was busy in December! Contractors were on site early to service the standby generator, install a new replacement window on the second floor and install a new office door to the research room.

We are also still waiting for the insurance company contractor to replace the damaged door jam to the research room.



The back of the Memorial Town Building looks fantastic with it's new windows!



Maintenance

Forestdale School (190 School Street)



Unfortunately, we've noticed a water stain on the new ceiling in the library portion of the school. The contractor determined that part of the problem was an improperly sealed window sash in the attic along with gaps between the clapboard siding and sheathing. He corrected the problems.

Also, as soon as we raise enough money, we plan to install bulk insulation above the ceiling.

We need members to help open the school to the public.

Please contact us if you can spare a couple of hours a month. Meanwhile, we will open the building by appointment.

Heritage Hall (101 Green Street)



No maintenance to report at Heritage Hall.

We'd like to thank Bob Frances Interiors for restoring the second of the two large throne chairs that once belonged to the Union Grange. If we receive a grant, we will restore the two smaller throne chairs. The chairs are on display at the Heritage Hall where the Grange used to meet.



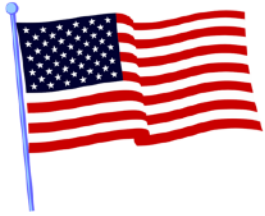
Winter is upon us!

Charlie desperately needs two people to help shovel the sidewalks at Heritage Hall and the Forestdale School. Please contact him at 401-741-8022 if you can help!





Veterans Memorial Program



The NSHA, in cooperation with the Veterans of Foreign Wars, will fly the U.S. Flag at the Memorial Building for a period of thirty days each month in honor of deceased local veterans. We will conduct a brief flag-raising ceremony in honor of the veteran as well as publish a brief biography of the honoree's military service in the NSHA newsletter. Families can use the honored veteran's Memorial Flag or a NSHA Flag. Please contact NSHA at nsha@nsheritageassn.com or call [401-376-2927](tel:401-376-2927) to nominate a veteran.

We thank the VFW for donating a new U.S. Flag for the Memorial Town Building.

Members of the VFW Post plan to raise the new flag at 10:00 am on Saturday, February 3, 2024, when we will honor WWII veteran, William Schnorr. We welcome the public to attend.

William (Bill) Hart Schnorr grew up on a dairy farm on Central Street in Slatersville where the De Rezendes house now sits. He was the middle son of Edward and Stella Schnorr's three sons. The family sold ice, milk, and heating fuel in town. The farm burned in the late 1940s.

Bill enlisted in the Army Air Corps on August 20, 1943, at the age of 17. He would not turn 18 until September 30, 1943. After training, he was stationed at Bury St. Edmunds in England. He was a gunner/bombardier and flew in a B-17. He reached the rank of Sergeant.

Following WWII, Bill went into business for himself (Schnorr Construction) and made a comfortable life for himself and his family. He stayed in Slatersville until 1988, when he moved to Maine to care for his elderly father. His heart remained in Slatersville, however, and his wish was to be buried alongside family in the Slatersville Cemetery. He passed away at age 92 on March 21, 2018.





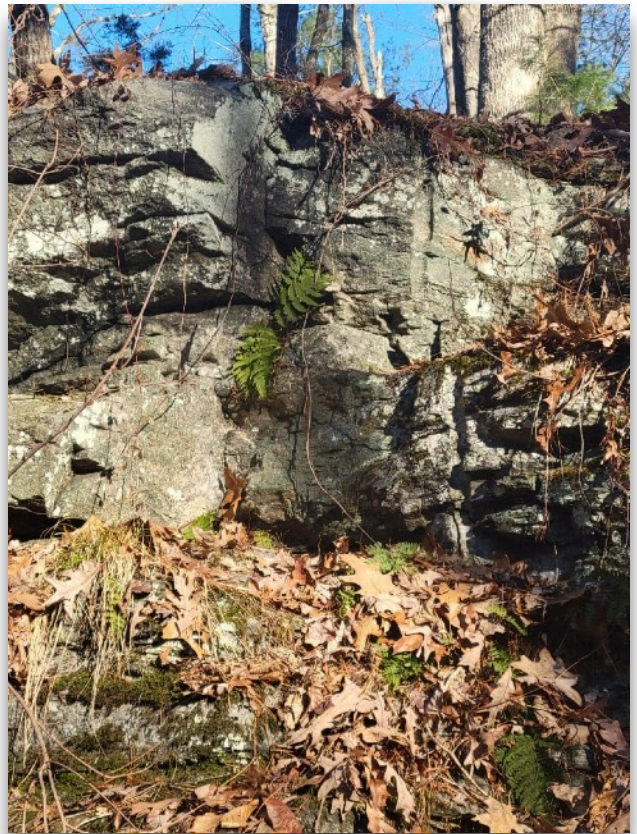
Research Team

The Research Team continues to locate and document local colonial indigenous and other historical stone features. Recently, the team investigate an old quarry near lake Belair that might have provided material for the dam at the lake or the nearby Fields Swinery. The team also investigated what it considers indigenous stone features on Nipsachuck Hill. One is a “Prayer Seat”, the only one like it to exist in the town.

The team generally meets at 6:00 pm at Heritage Hall on the second Friday of each month. If you’d like to join us, please contact NSHA for the next meeting date!



The “Prayer Seat” located by the Research Team.



Drill marks in the stone from the old quarry near Lake Belair.



Overview of Lake Belair.



Heritage Walks and Tours 2024

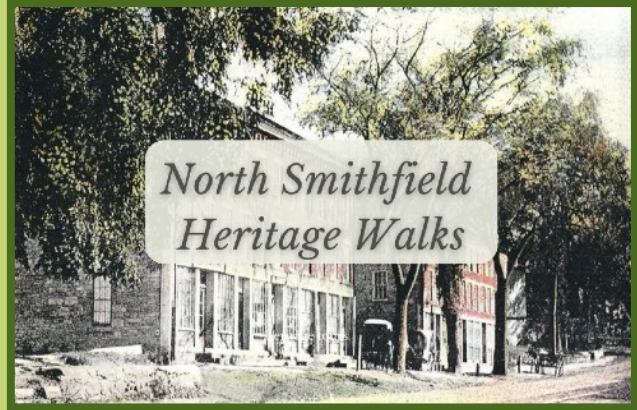
All NSHA Heritage Walks and tours start at 9:30 am.

Please see the individual walk description for the meeting place.

Tours are generally rain or shine unless there is a downpour or blizzard when we start.

Participants are encouraged to wear long pants, use insect repellent, and bring water.

See NSHA Facebook Page Events or contact nsha@nsheritageassn.com for more information.



January 20: Primrose & Grange Rd: Sheldon Four Corners, Malavery House; Durrans Farm NS20; Primrose Grange; NS30; Blackmar-Wing Farm ruins NS26 & 40. Meet at NS High School tennis courts on Grange Road.

February 17: Booth Pond, Pine Hill, Souza Farm. Meet at Aldi's parking lot at Dowling Village.

March 16: Wunnashowatuckqut: Old Harkness Rd, High Rocks Gorge, Colony Rd, and Stone Features. Meet at the Forestdale School, 190 School Street.

April 27: Crookfall Brook: Woonsocket Reservoir #1 & Pump House, Woonsocket Reservoir #2 and Mill Site, Spring Brook. Meet at Aldi's parking lot at Dowling Village.

May 25: Waterford: Coblin Rock, Mammoth Mills Ruins, Blackstone Canal, Waterford School, St. Paul's Church, Waterford RR Station, RR Fountain, Covered Bridge Site. Meet at Fire House Pizza parking lot, Great Road.

June 22: Union Village: Great Road, Pound Hill Rd, Union Cemetery. Meet at Union Cemetery, Smithfield Road.

July 13: Slatersville: Main St. Green Street, Slatersville Mills, Centennial Park. Meet at the Memorial Town Building, 1 Main Street.

August 17: Wesquidomsett: West Farm, NS 60, NS24, Tyler Mowry House, NS 32, Old Sayles Hill Rd, Rustic Drive-In, Milk Can, Paine Mill. Meet at Aldi's parking lot at Dowling Village.

September 28: Nipsachuck Legacy: The Blunders, Nipsachuck National Battlefield & Black Plain Hill Stone Landscape, Three Dog Site, NS57. Meet at the NS Middle School Parking lot, Providence Pike.

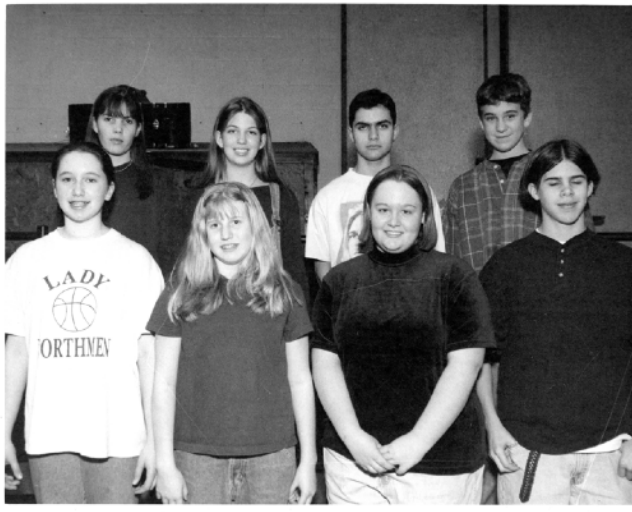
October 19: Pound Hill Road: Smithfield Union Bank, NS8, Aldrich Farm, Staples Farm, Staples School, Nike Site, Nike Site RIANG, NS55, Landfill.

November 16: Woonsocket Hill Road: NS19, Mathewson Homestead, Follett Farm, Philip Mowry House and NS47, Mowry Fire Tower, Martin Farm, Wright's Farm, Meet at the NS Middle School parking lot.

December 21: Woonsocket Reservoir #3: NS48 Oliver Smith Lot, Amasa Sweet Quarry, Great Wall, William Mowry Homestead, Obed Paine Homestead. Meet at NS High School Tennis Courts on Grange Road.



December Mystery Photo



Once again social media saves the day! The photo has been identified by many Facebook users as a NS band photo from the late 1990's. Does anyone know what yearbook it appears in?

Back Row: Jill Dale, Jill Cormier, Mark Salmon, James Ady

Front Row: Megan Leclair, Mary Beth Young, Nicole Recore Molina, Doug Gobeille.

January Mystery Photo



This month's mystery photo is a little different because while we know what the subject is, we don't know where the actual object is located! We have a photo of this commemorative apron in our archives but we don't have the actual apron. Does anyone know who owns it? In case you are curious, under Gov. Thomas W. Dorr: it says "Elected under the people's ...". Sadly, the last word is too blurry to make out.

The NSHA often receives photos without any type of identification which is why we post them here. Please help us to identify them for our archives!



NSHA Merchandise

Our wide range of merchandise includes calendars, books, cozy throws, jigsaw puzzles, ornaments and so much more! Free local delivery!

We have just one Forestdale School ornament left and the horse-drawn school bus has sold out!



View our entire inventory at the **NSHA On-line shop** at <https://www.nsheritageassn.org/shop>

NSHA Payment Options

1. **PayPal Giving Fund:** search for nsha@nsheritageassn.com, select “**Donation**” and type the purpose for the payment on the memo line.
2. **Venmo:** Open the Venmo app and search for North Smithfield Heritage Assn@NorthSmithfieldHeritageAssn. Tap on Pay, enter the dollar amount to be paid, and fill in the field what’s it for (ie., dues, merchandise, donation etc). Tap on Pay and select your payment method you have established in the Venmo app.
3. Give **cash or check**. Make checks payable to “NSHA”. Note “**Dues, Annual Appeal or Merchandise**” on the memo line.
4. **Mail Checks** to NS Heritage Assn, P.O. Box 413, Slatersville, RI 02876.
5. We will also pick up payments and deliver purchases at your door if you live locally. Contact nsha@nsheritageassn.com or call [401-376-2927](tel:401-376-2927).



The North Smithfield Heritage Association Fund

Estate planning? Need to make a Required Minimum Distribution (RMD) from your IRA? Make a tax-deductible legacy donation to this RI Foundation managed fund. Your donation earns interest every year. The NSHA only uses a portion of the earned interest each year for preservation activities. Your donation therefore, continues to grow in perpetuity, increasing the interest that the NSHA can use each each year for historic preservation.

Click on the link for more information:

<https://rifoundation.org/giving/funds?q=north+smithfield+heritage+&s=3>



Outreach

Annual Dues are now due for 2024!!

~ The NSHA relies heavily on membership dues to pay operating expenses. We thank our members for their steadfast support! Our membership now stands at 209 including 15 life members and 5 students.

~Your \$20 annual dues allow us to conduct vital preservation activities. Seniors over 75, high school students and full-time college students pay no dues.

~We thank the 81 members who joined or renewed this year! ~Annual Dues are due on January 1, 2024. Those who recently renewed are good for the calendar year 2024.

~Members in arrears or with expired memberships can renew at any time. **If you are not sure of your status, please contact us.**

~You can become a member by filling out an application found on our website: <https://www.nsheritageassn.org/membership> or you may pay by mail, via the PAYPAL Giving Fund, or M, T, W mornings at the Memorial Town Building.

~No new members this month, but we welcome back Blair Reichenburg and David De la Cruz!

You Can Help!!

Volunteer: Help with any of our ongoing activities and events. No need to make a commitment. We appreciate whatever time you can spend with us.

Join: It costs just \$20 each year!

Share: Only shared history can preserve our heritage!

Donate: Our Annual Appeal runs all year long. We like local artifacts. We appreciate whatever you can give!



Instagram (nsha1970)
Please follow us!

Instagram followers:280

Visit our **Facebook Page** to learn about our events and activities. Get acquainted with some of our members and supporters. Like and share with friends and family!

www.facebook.com/northsmithfieldheritage



Facebook followers:1315

We thank Julie Tilley for making posts to all of our social media platforms! We continue to see steady follower growth.

Website visitors: 365 site sessions in last 30 days.

Visit our website! Read past newsletters, learn about our organization as well as our many ongoing historic preservation activities. <https://www.nsheritageassn.org/>

NSHA Newsletter Subscribers:1432

To join our mailing list, simply contact us at nsha@nsheritageassn.com or [401-376-2927](tel:401-376-2927)

This newsletter is published by Lynne Pelletier. The editorial team includes Beth Faricy, Jody Lamoureux, Linda Rawlings, Al Menard and Rich Keene.

Please share this free newsletter with family and friends!!